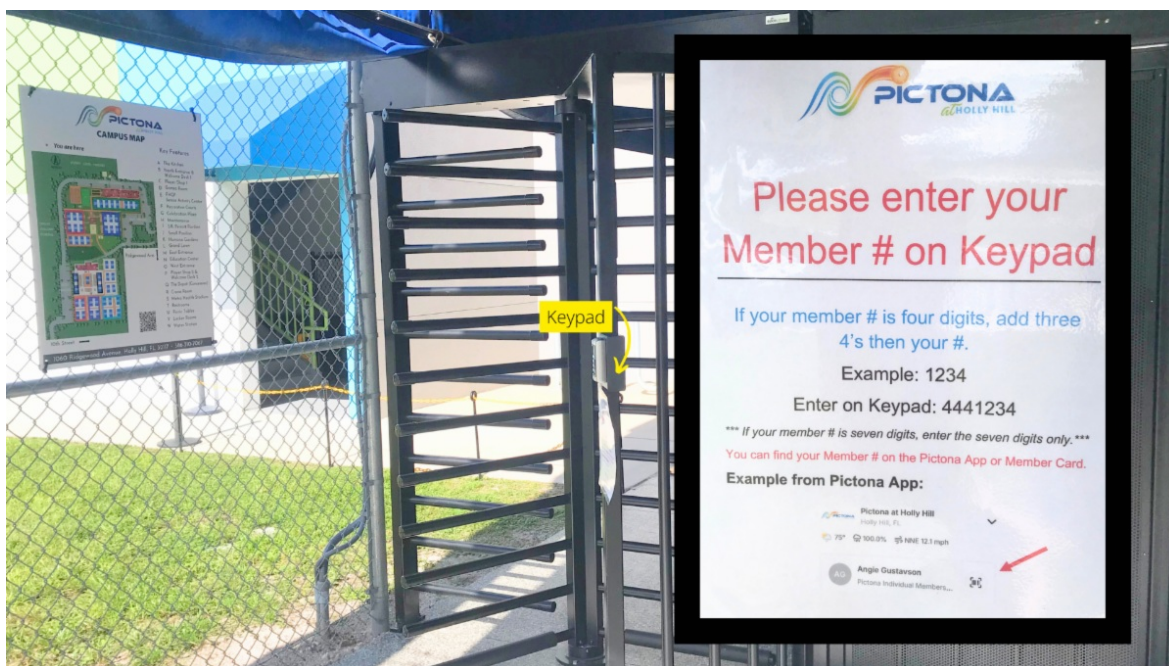




****PLEASE NOTE: BEGINNING 10/1
PICTONA OPENS AT
8 AM**

West Entrance Turnstile Now Operational



To help reduce labor costs, we've installed a **turnstile at the West Entrance of Pictona 2**. While we may have staff occasionally present to assist during the transition, **Welcome Desk 2 will no longer be staffed**. ONLY MEMBERS WITH ACTIVE MEMBERSHIPS CAN HAVE ACCESS TO THE TURNSTILE. ALL DAY PASS AND PUNCH CARD HOLDER MUST ENTER AT THE NORTH ENTRANCE, AT P1.

□ How to Enter:

- Follow the directions on the **keypad**.
- Enter your **membership number** — the turnstile will unlock automatically.

- **Scan your card** at the Window.

☐ **Need Help?**

- If your membership number doesn't work but your membership is active, use the **call box** to the right of the gate. A **Welcome Desk Associate** will assist you.
- Not sure what your membership number is? Check your **membership card** or the **Pictona App**.

⚠ **Gate Use & Alarm Notice:**

The adjacent **gate is not an exit or alternate entrance**.

An **alarm will be activated soon**, and signage will indicate this.

Using the gate improperly will trigger the alarm.

We thank you for your patience during this transition.

See you on the courts!



Update From Rainer

Your Pictona staff has been working feverishly to prepare for some exciting improvements at Pictona. I'll list them briefly here and we'll be telling you much more about them in the next two weeks.

Court Monitors: We hope you have seen the two monitors that show all 49 courts. One is located at P1 by the entry door to the courts and the other on the P2 stadium wall when you enter from the east side. We are making adjustments to the camera angles and the order of rotation for viewing the courts. Next we will connect the Court Monitor to the internet so you can see the courts anywhere you have internet access.

Turnstile: The turnstile at P2 has been very trying. We apologize for the inconvenience that the turnstile has created when it did not function properly. It is now working, but some improvements need to be made. Note this: When you enter through the turnstile, you **STILL MUST SCAN YOUR MEMBERSHIP CARD**.

Court Use: We've been studying court usage throughout the spring and summer. We've heard your concerns and suggestions for improvements. Beginning October 1 we will arrange for court play by skill level. We'll tell you much more about these changes in a forthcoming special edition of Pictona News.

We've been working for weeks on redesigning and updating the website. We have thought carefully about how to best present the substantial amount of information that keeps members and others updated. We'll release the website next Friday, September, 26.

Lastly, Julie and I will be retiring as of January 1. The Pictona Board is searching for a new Executive Director. Julie and I have been working for Pictona as volunteers since 2018. Now it is time for new leadership.



Meet Pictona Board Member



Lynette Bowman, Secretary

Lynette started playing pickleball three years ago when a good friend kept encouraging her to try it. The moment she stepped on the court, she was hooked! Pickleball turned out to be the perfect blend of social fun, friendly competition, and just the right amount of exercise. Since then, she has played two-four times per week and is enjoying the incredible community that comes with it.

After joining the Board in 2025 she shared, "As a board member at Pictona, I'm excited to help grow this amazing sport and create a welcoming space for players of all levels. Whether you're picking up a paddle for the first

time or just looking for a great way to stay active and connected, pickleball truly has something for everyone."

Lynette is married to Scott, has two grown sons, and a new daughter-in-law who all enjoy playing pickleball. She will become a Mimi to twins later this year!



INSTRUCTION

OCTOBER SCHEDULES ARE SET!



Instructional Schedule



Intramural Schedule



Music, Drink Specials & Costume Contest

- October 31; 6 - 9 PM
- Must Play in Costume!
- Best Costume Prize
- \$5 for Members / \$10 for Non-Members



Calling all college students- join us every Thursday from 5-9pm for an evening of pickleball, music, and good vibes!

- Entry: \$10 with valid student ID; FREE for members
- Location: Pictona at Holly Hill
- Time: 5 PM - 9 PM
- EXTRAS: Music, Fun, and a social atmosphere

Courts will be exclusively reserved for college players. Whether you're a seasoned player or new to the game, come out and enjoy the fun!



TOURNAMENTS



6th Annual Pictona Open
by Emerge Insurance Services
OCTOBER 23 - 26, 2025

Register by October 6th for your FREE T-Shirt!

Over 460 players registered!

You'll appreciate playing in a round robin format capped with a playoff. For each bracket the round robins are played in a pod of courts, resulting in minimal wait time between games. Earn your way to the championship finals, most of which are played in the MetroHealth Stadium for a memorable experience.

**Register for the PICTONA OPEN
HERE!**



Inaugural Club Invitational Cup on November 22–23, 2025!

This groundbreaking team-format tournament will showcase top pickleball talent from across the region as clubs compete for bragging rights, medals, and the coveted Club Invitational Cup Trophy.

- Divisions: Men's Doubles & Women's Doubles
- Skill Levels: 3.0, 3.5, 4.0, 4.5+
- Round robin pod play → Top 4 playoff → Championship Finals
- Championship Venue: Most finals hosted in MetroHealth Stadium for a professional tournament atmosphere

Team Pictona will be selected from the winners of the September 20 Pictona Member Jamboree Tournament.

Contact Scott Thornton at scottt@pictona.org for more info.



2025 US Senior Pickleball National Championships

December 5-8, 2025

[USSP REGISTRATION CLICK HERE!](#)

Registration re-opens on September 25

THE ONLY **national pickleball championship** tournament designed
specifically for **players ages 50-80+!**

Nearly 700 Players Registered!

The tournament was created to provide senior players with the best possible experience and features they enjoy. Tournament format provides brackets for age/skill divisions in every five-year age bracket, and all brackets are played as round robin format.



TWO-DAY ON COURT DEMO & CONVERSATION

with Co-Authors

Pickleball Mindset - The Blueprint for Peak Performance

How to grow and nourish a confident
mindset through your pickleball journey.

Featuring senior pro and coach Dayne Gingrich and pickleball yogi Jill

Martin, this on-court conversation and clinic will focus on the mental and physical aspects of playing your best pickleball as a senior. More info [HERE](#).

Thank you Sponsors of Pictona!

Pictona is proud to have the support of numerous companies that have chosen to sponsor our club. We greatly appreciate their partnership and encourage you to explore the outstanding products and services they offer!

Sponsorship Directory



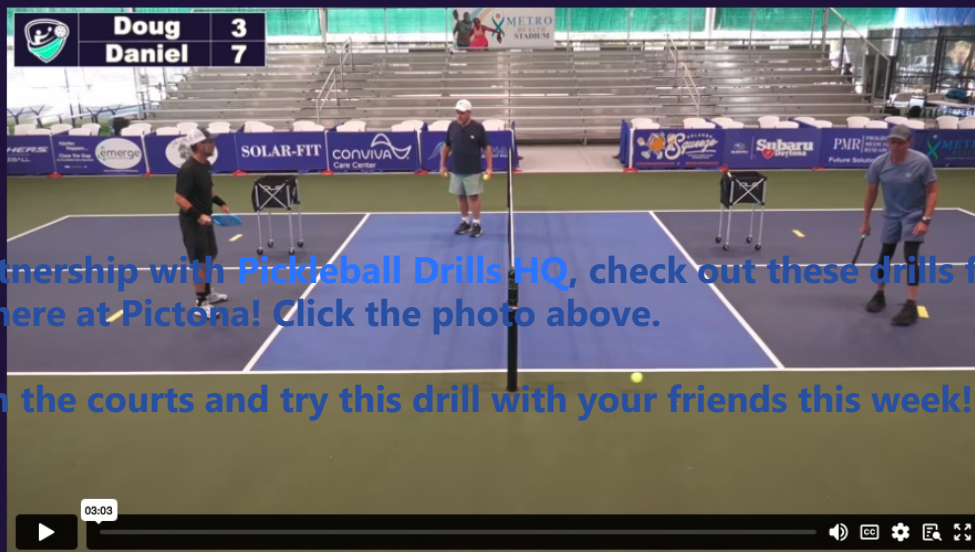
PLAYER SHOP



Care Advantage Accepted at the Player Shop!

Got a Care Advantage card? You can spend it right here at Pictona's Player Shop on paddles, shoes, apparel, and more. Don't let your benefits go to waste —**use it or lose it!**

Tug of War



ACTIVITY CENTER

STRENGTH & STRETCH

➡ Wednesdays 11:15 - 12:00 with Mardi

**Starts
October 1**



FHCP Activity Center



Using chairs and standing with or without support, classes consist of a dynamic warm-up, movements with weights, stretching, balance and a calming cool-down for a total body workout.

Benefits include improved balance, muscular strength, posture, mental clarity, coordination, flexibility, circulation, joint mobility and energy.

Classes have modifications for all levels of fitness, relaxation, and fun while getting healthier!

CLICK [HERE](#) for weekly classes!



EVENTS



Concert Series at Pictona
CLICK HERE - FREE TICKETS!

10/10 - Spazmatics - All Out 80's
11/7 - O Motown



SPONSOR HIGHLIGHT



Senior primary care that works for you

For more than 50 years, our patients have discovered a healthcare home with physicians who listen and take the time to understand each patient's unique health journey. Learn More [HERE!](#)



SKECHERS

High-performance products designed to meet the demands of athletes.

[Visit our Website](#)



Pictona was built through a public-private partnership with the City of Holly Hill and Martens Charities, and \$2.9 million in Volusia County ECHOgrants.



Pictona at Holly Hill | 1060 Ridgewood Ave. | Holly Hill, FL 32117 US

[Unsubscribe](#) | [Update Profile](#) | [Constant Contact Data Notice](#)



Try email marketing for free today!